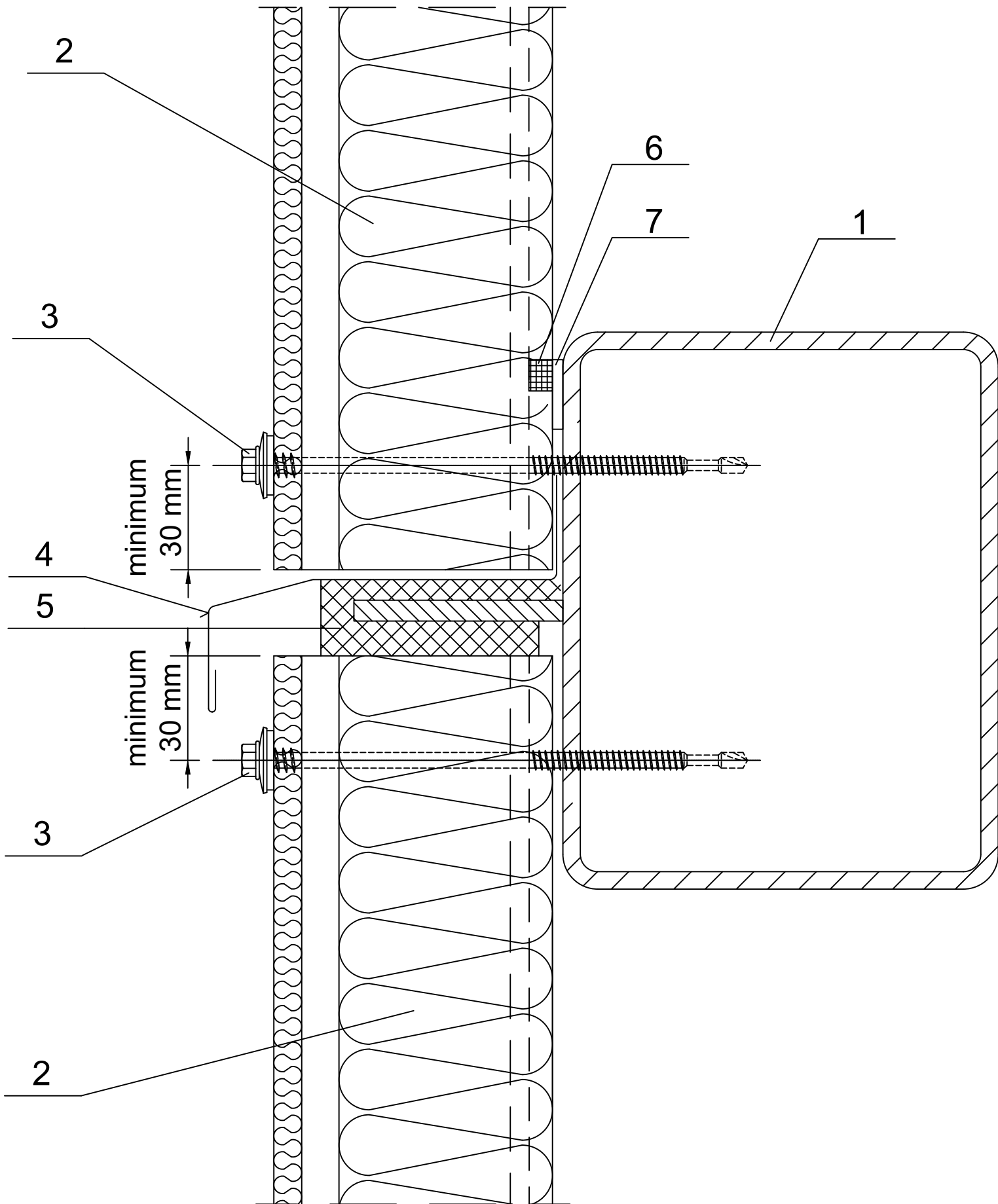


Date	Rev. date	Work nr	Drw nr	Rev
Drawn by Ruukki	Rev.	M30/S10	-	
Scale 1:2	Building		File Nr P2001/003-00040	



- 1. Steel sheeting rail acc. to engineering design of the structure.
- 2. Ruukki SP2D PIR.
- 3. Panel fastener for hot-rolled sheeting rail or for cold-bent sheeting rail.
- 4. Custom ordered drip.
- 5. Impregnated polyurethane sealant or expanded foam.
- 6. 4x20 PIR self-adhesive sealant.
- 7. Permanently elastic sealing compound.